

L'harmonie monochrome (1 ton)



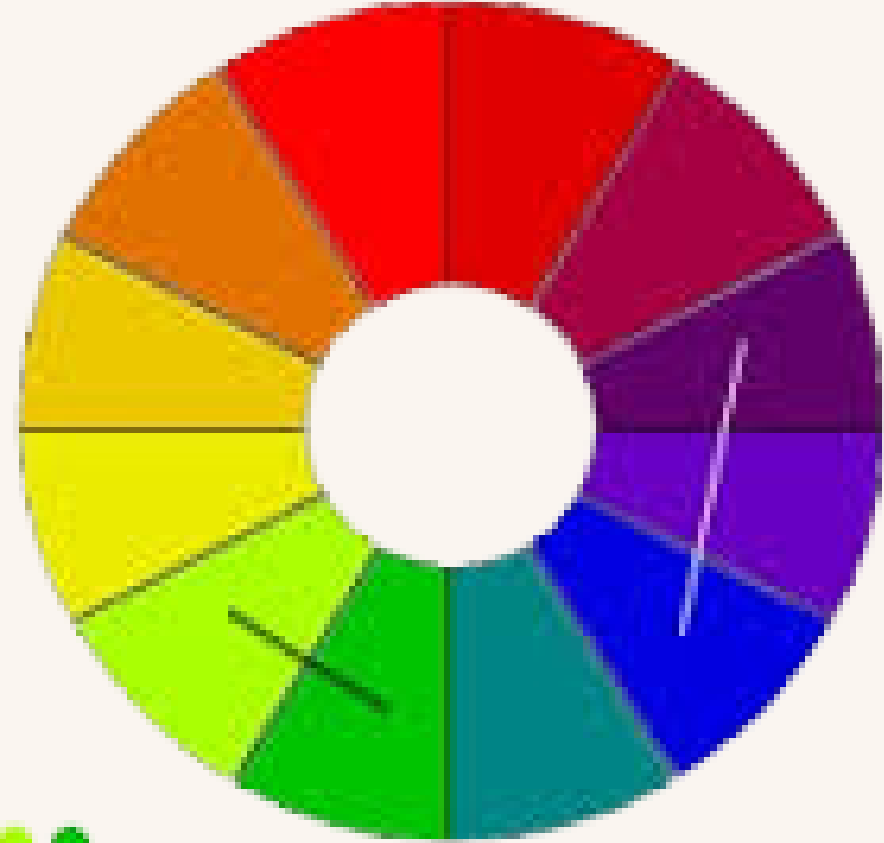
L'harmonie monochrome neutre (1 ton)



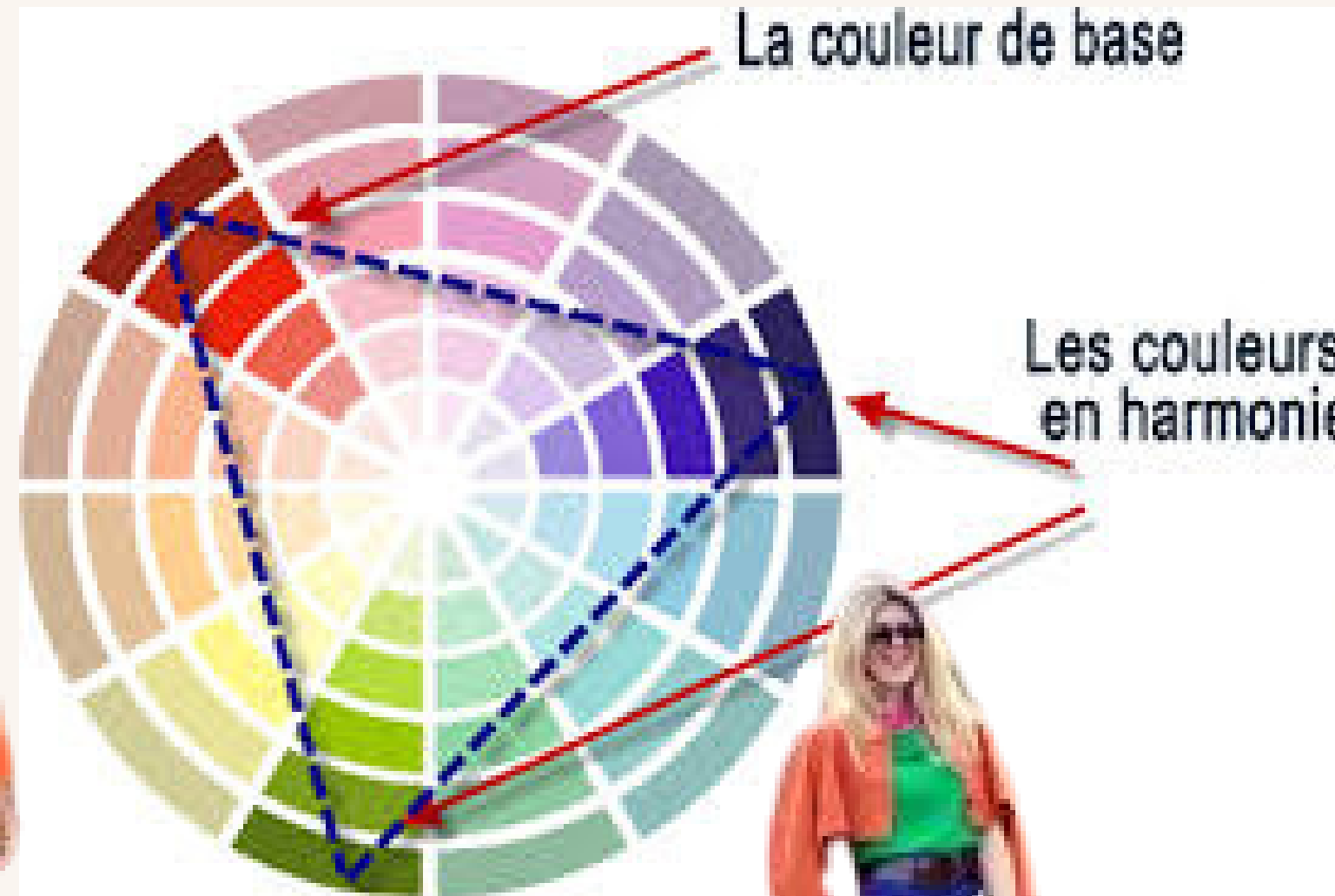
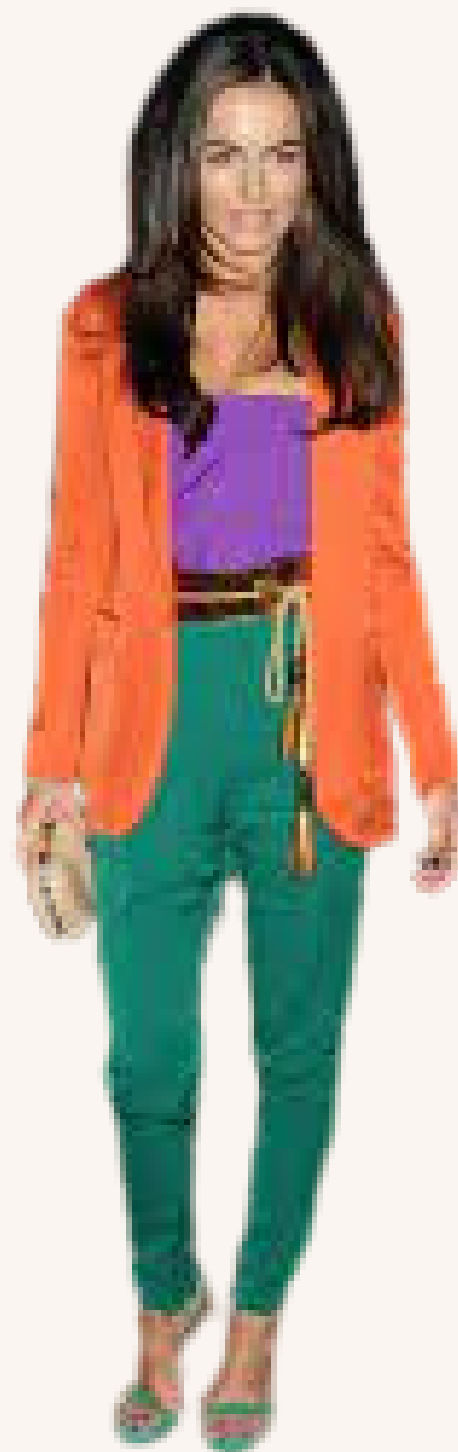
L'harmonie complémentaire (2 tons)



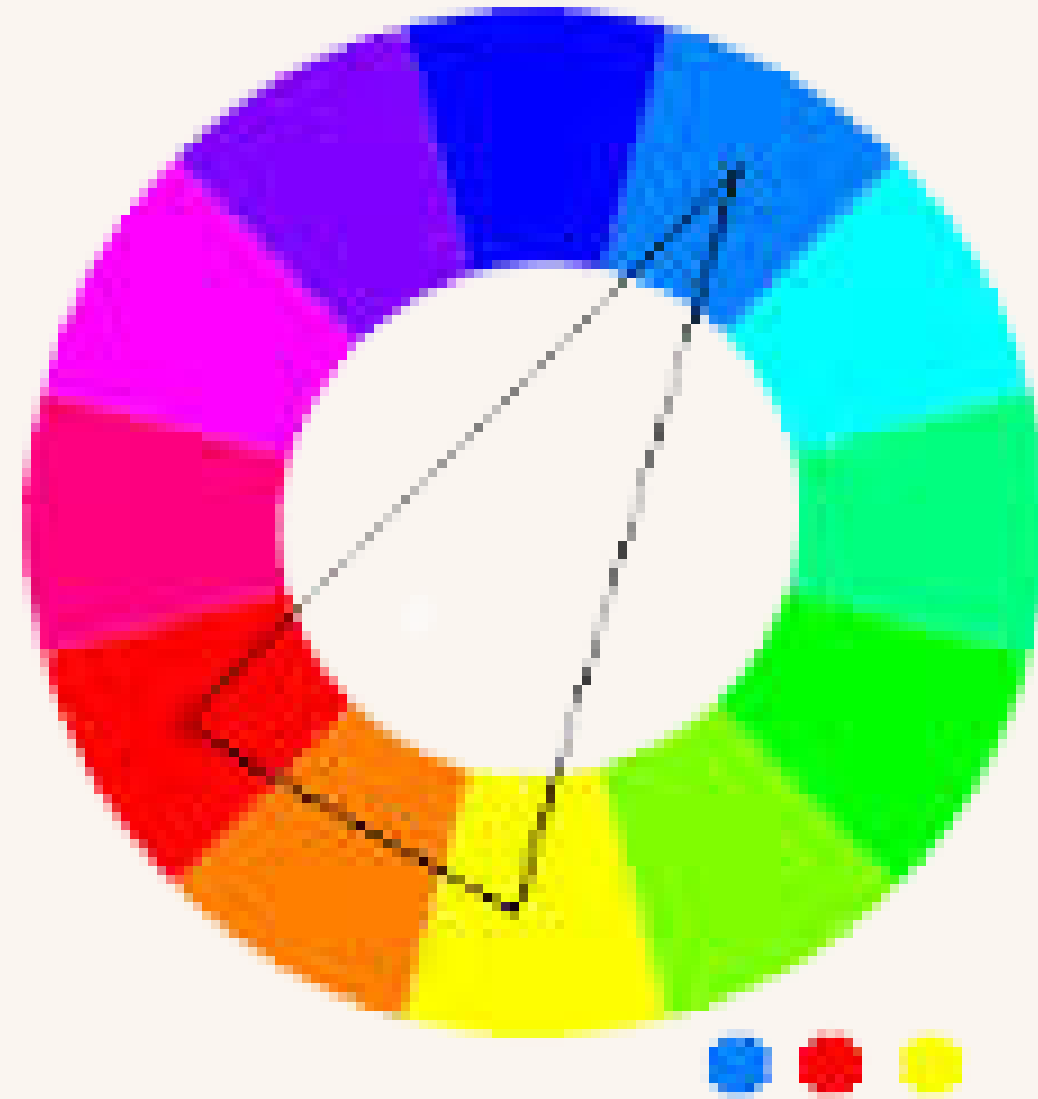
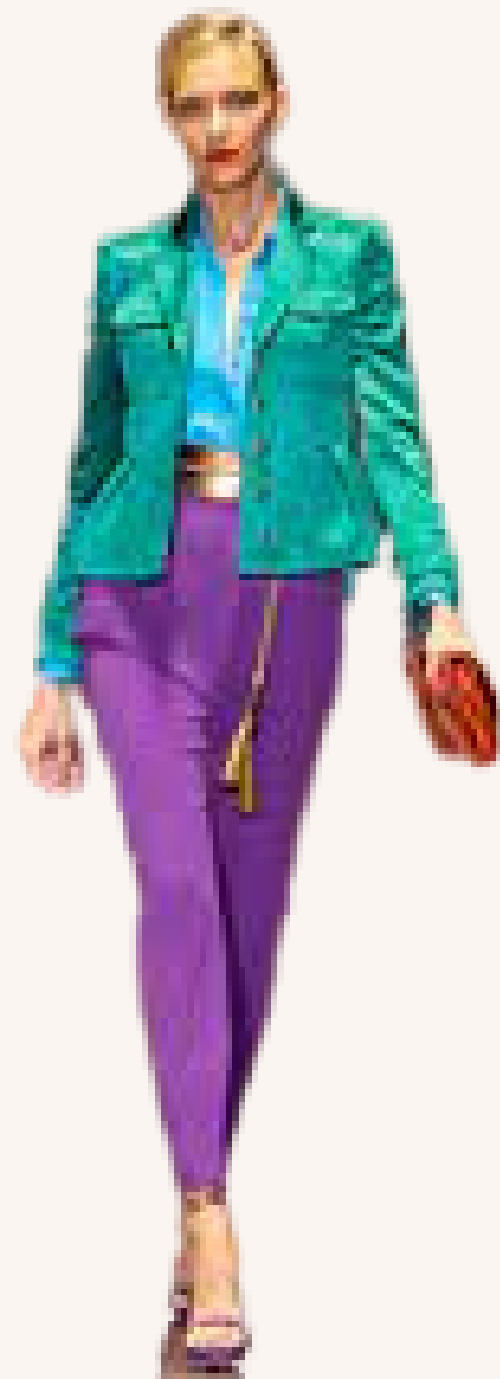
L'harmonie de camaïeu (2 ou 3 tons)



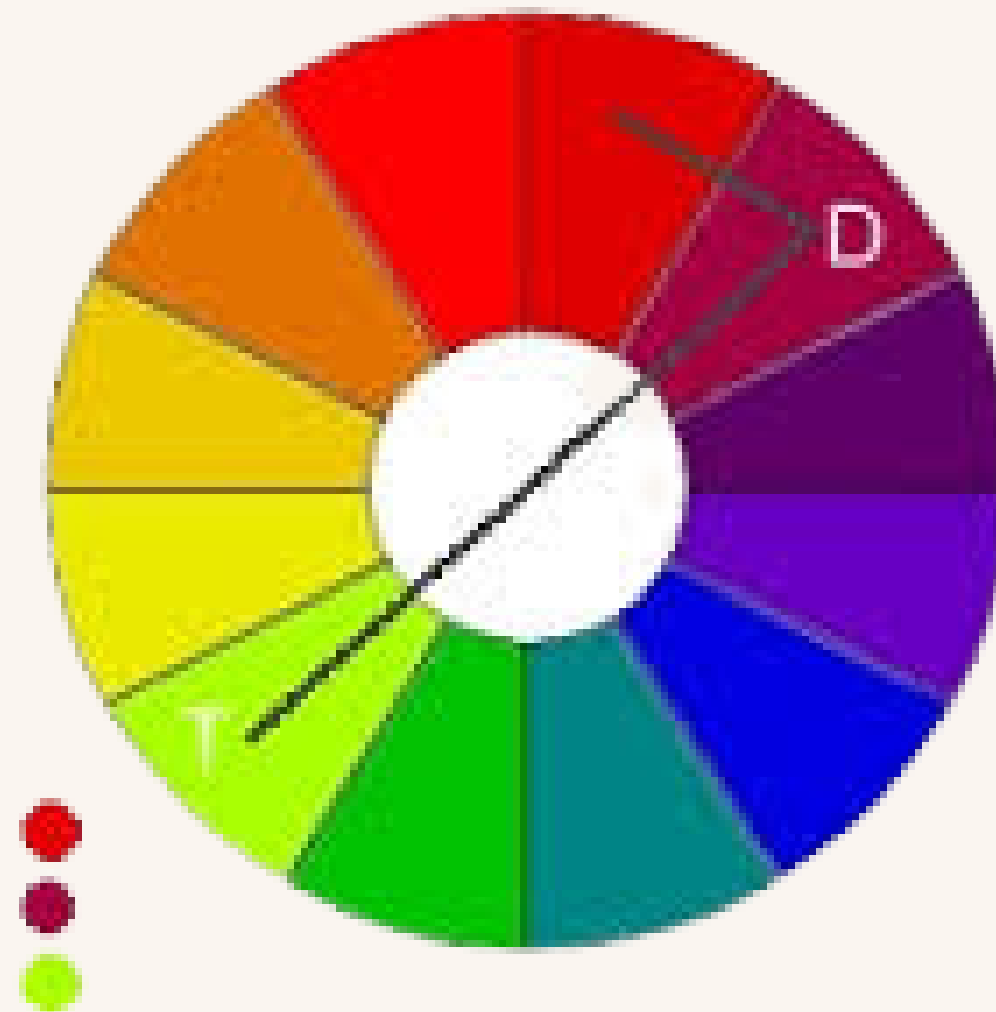
L'harmonie équilatérale (3 tons)



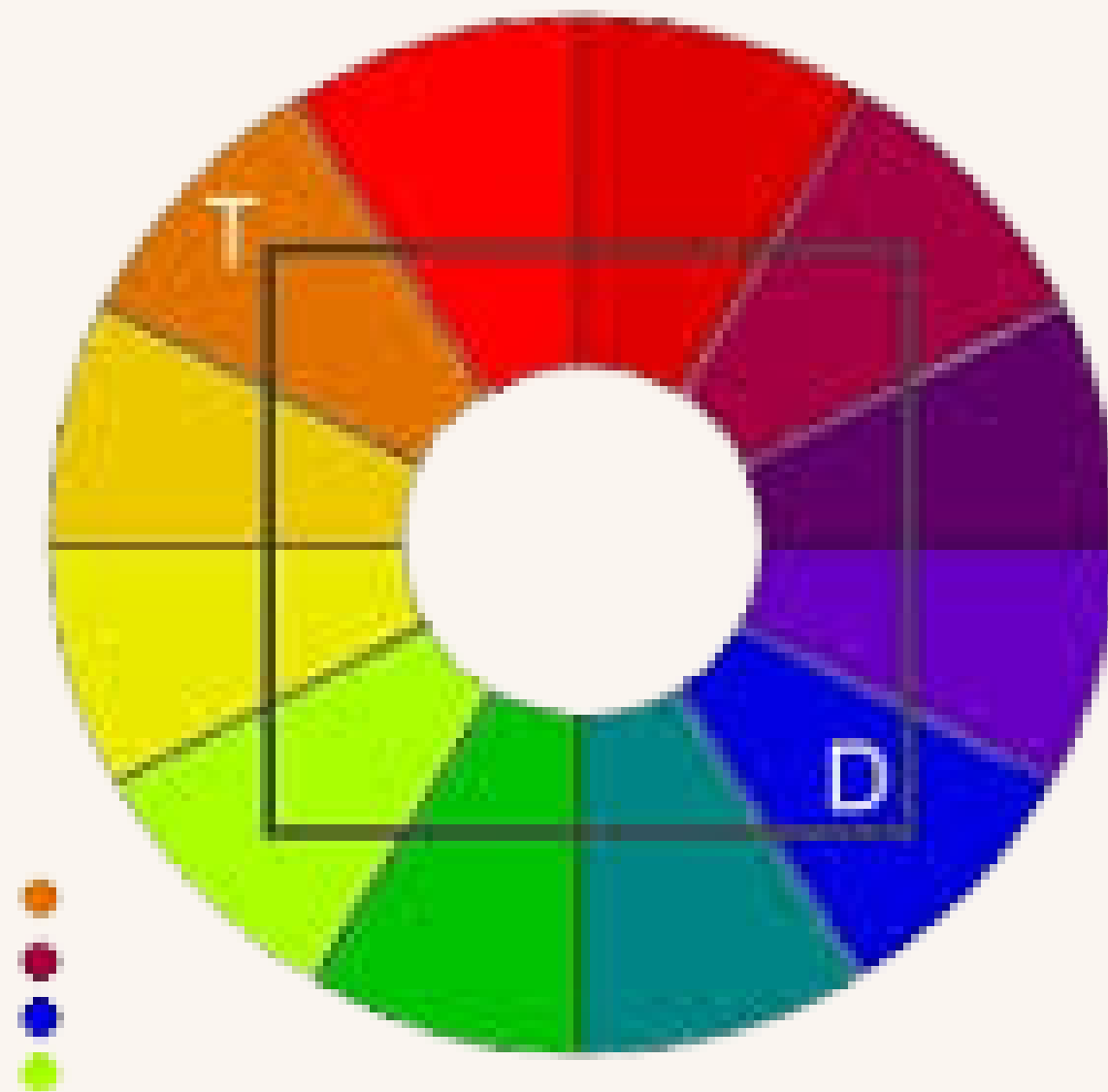
L'harmonie complémentaire adjacente



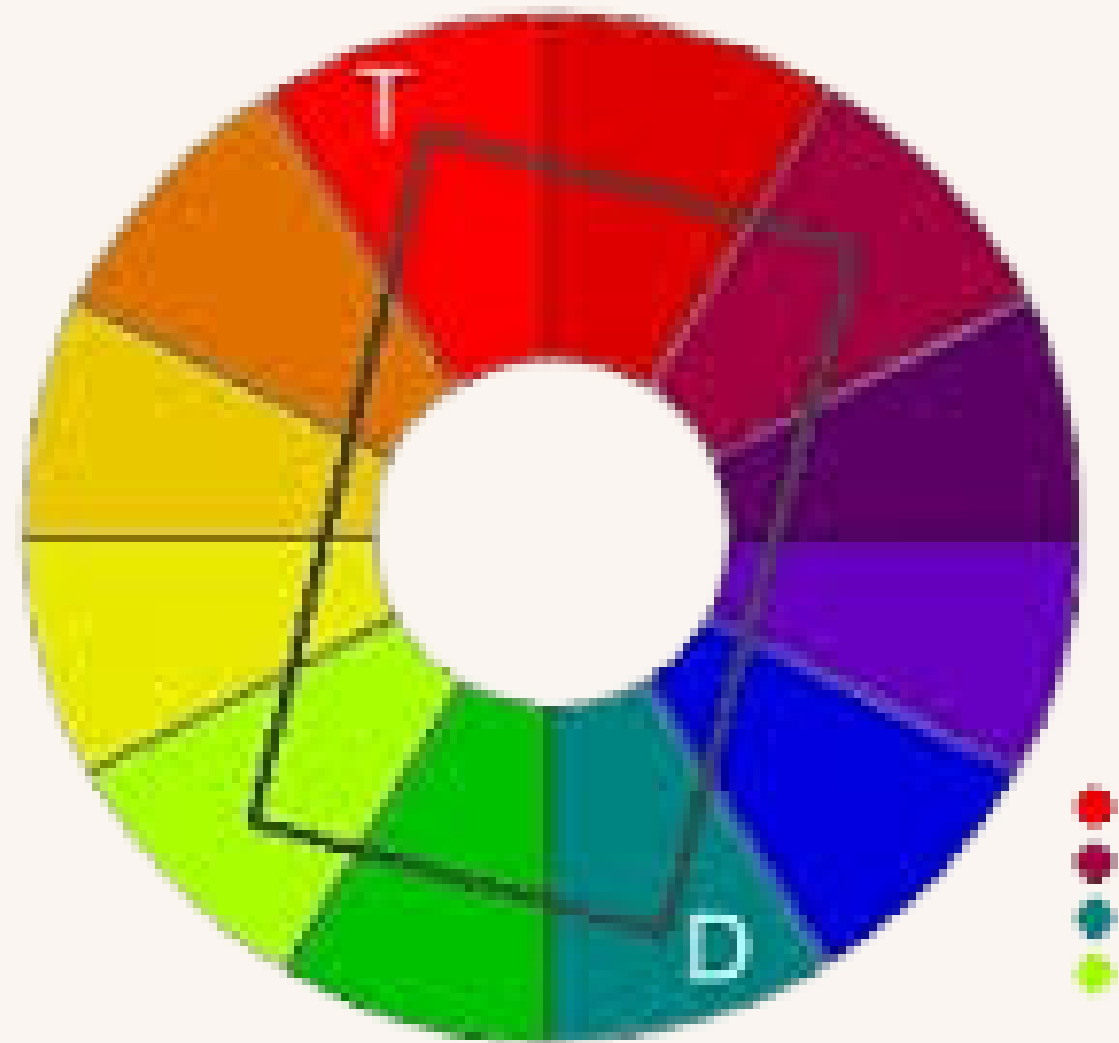
L'harmonie camaïeu double + 1 complémentaire



L'harmonie en carré (4 tons)



L'harmonie en rectangle (4 tons)



L'harmonie camaïeu triple + 1 complémentaire

